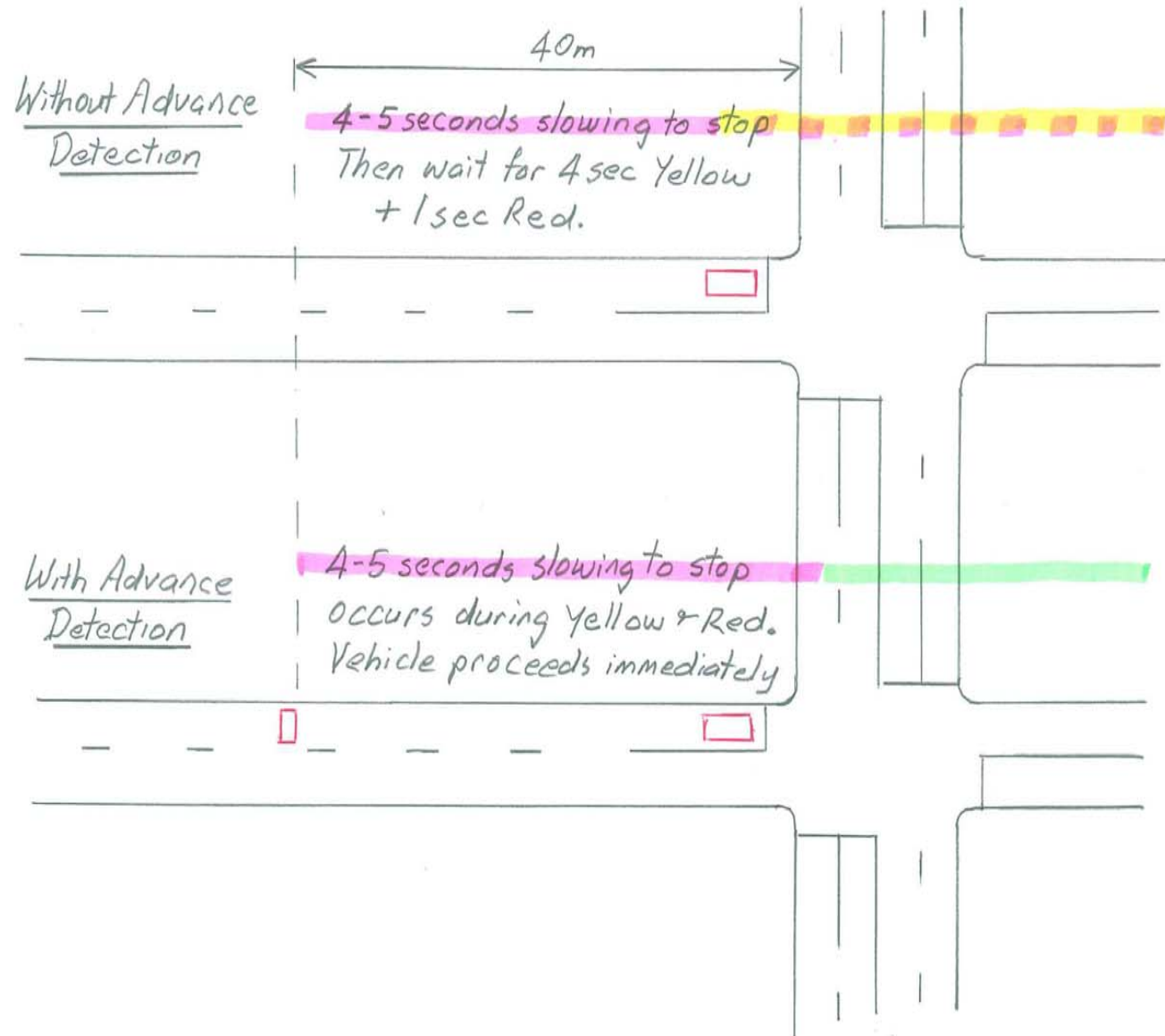


ADVANCE DETECTION

Peter Evans
Traffic Systems Engineer



Phase Introduction



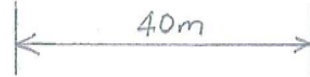
Phase Termination

Without Advance
Detection

Approach Speed 60 km/hr



With Advance
Detection



Safe Stopping

Without Advance Detection

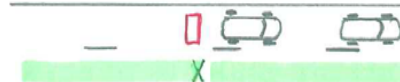
Safe Stopping Point



Yellow intro regardless of vehicle position

B decides to stop
+ A decides to proceed
= Nose to Tail Crash Potential

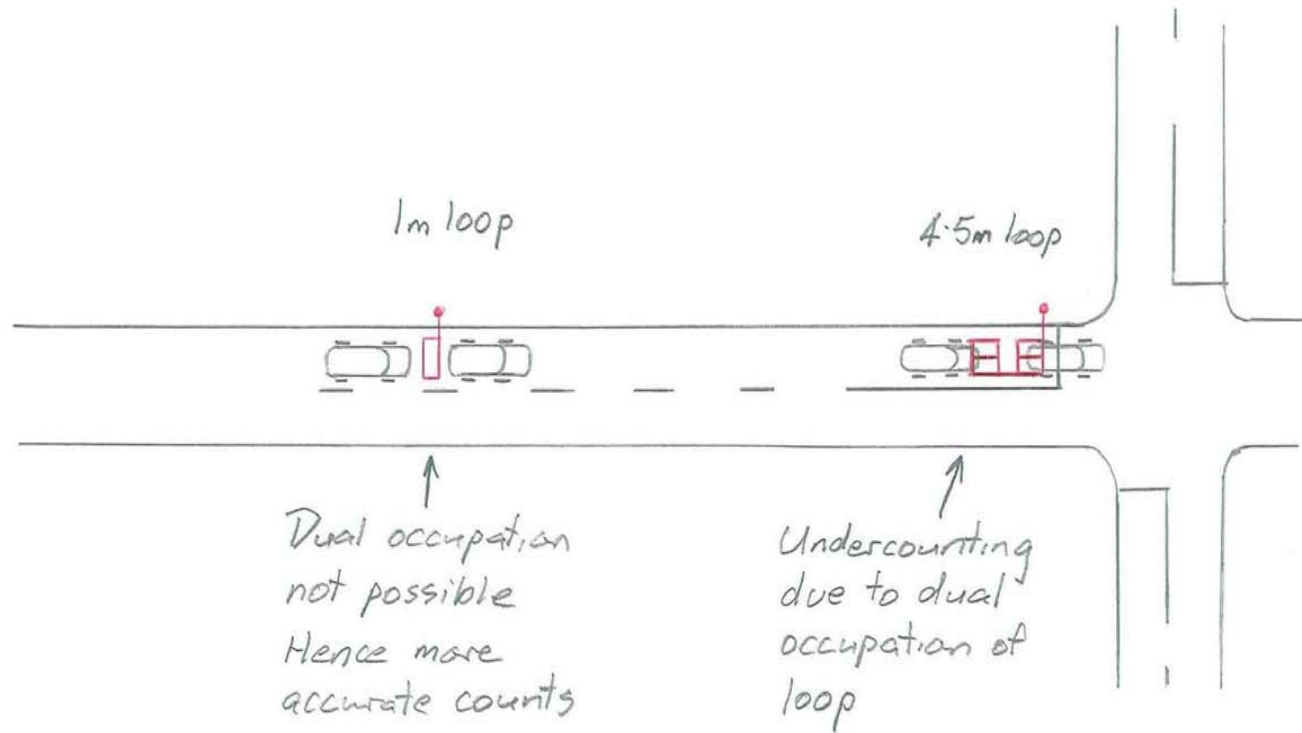
With Advance Detection



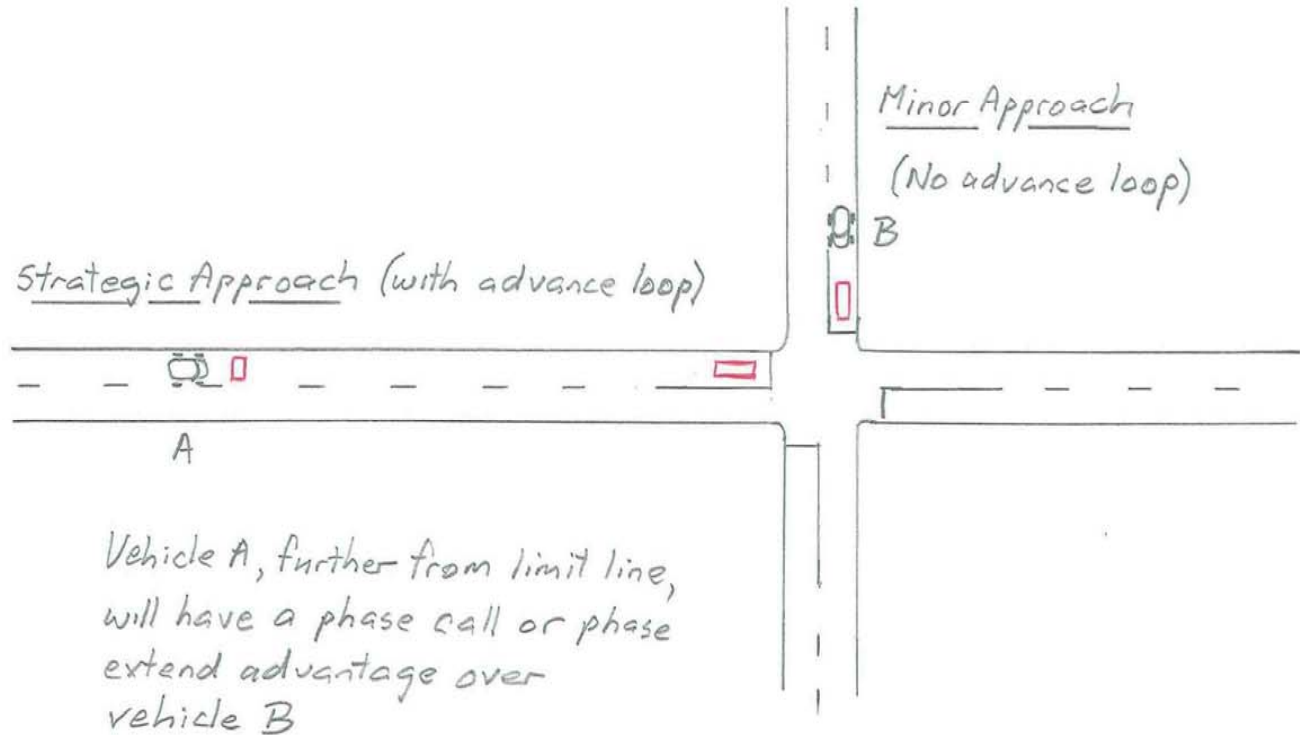
Yellow less likely to intro in zone of indecision due to advance detection providing further green extension



Traffic Counting



Approach Priority



Phase Termination - Safety Issue?

