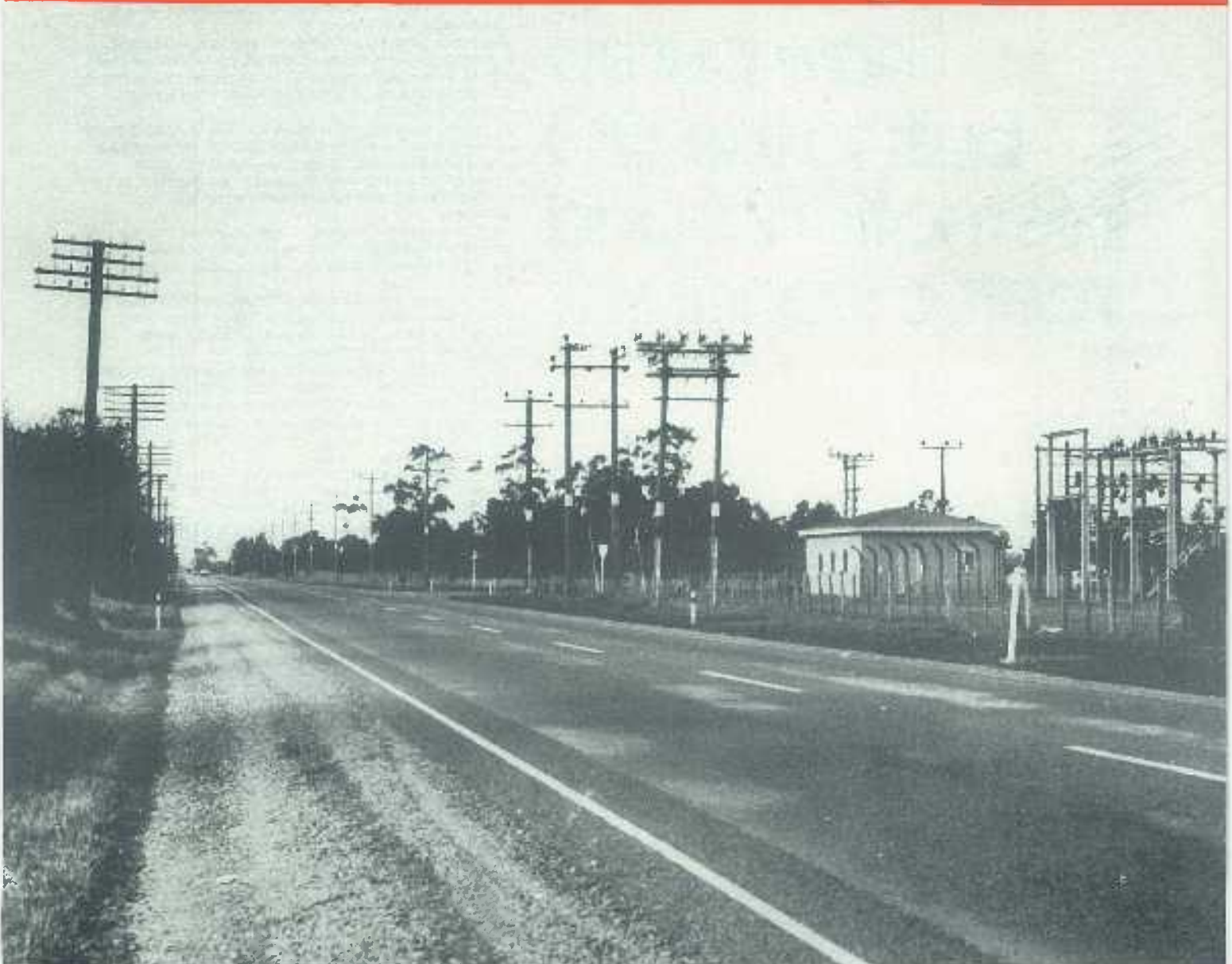


VOL. 34, NO. 7 15 JULY 1979

NEW ZEALAND

Engineering

THE JOURNAL
OF THE NEW ZEALAND INSTITUTION OF ENGINEERS



NIMBUS



An outstanding new pump built to the ISO International and metric standards

NIMBUS — a new metric range of standard, single entry, general purpose pumps, manufactured to ISO/DIS 2858 and DIN 24255 dimensions, with a single mechanical and hydraulic concept, but having a comprehensive coverage of duties in output and head.

Capacities range up to 1000m³/h (4000g.p.m. approx), and heads up to 120 metres (400 ft approx). The hydraulic design of the impellers is a product of the latest research and technology, combining maximum efficiency with good suction performance.

Shrouded impellers are employed, having balance holes to relieve pressure in the area of the gland/seal, and to reduce the hydraulic end thrust. Close grained cast iron is the material which will normally be used for the impellers, but the alternative of gunmetal is available for certain applications.

Nimbus pumps are of back pull-out design and can be dismantled without disturbing the pipework or motor when used with a spacer coupling, thereby reducing maintenance time.

One of the principal features of this new design is that twenty seven hydraulic units can be fitted to three basic bearing assemblies, a clear indication of the degree of standardisation that has been achieved.

Nimbus pumps can be used for most pumping applications where large solids are not present. Liquids able to be pumped range from water of varying purity in domestic water supplies, drainage, irrigation, and general circulation duties in industry and agriculture, to oil, chemicals and petroleum products.

Nimbus pumps are manufactured by Brown Brothers Engineers Ltd of Christchurch, to the design of Allen Gwynnes Pumps Ltd, of Bedford, England.

NIMBUS

For further information and technical data contact:



Brown Brothers Engineers Limited
Pumps Division

Christchurch:
P.O. Box 548,
Phone 50-279
Telex NZ4941

Auckland:
P.O. Box 38-228
Phone 567-417
or 566-922

Lower Hutt:
P.O. Box 30-733
Phone 677-868

NEW ZEALAND

Engineering

VOL. 34, NO. 7 : 15 JULY 1979

The journal of

THE N.Z. INSTITUTION OF ENGINEERS, Fourth Floor,
Molesworth House, 101 Molesworth Street, P.O. Box
12-241, Wellington 1.

President, D. A. THOM, C.ENG., F.I.C.E., F.N.Z.I.E.

Secretary, A. J. BARTLETT, M.A. (OXON)

Designed for

The New Zealand engineer and planned to cover all
aspects of professional engineering. This journal is
received by all members of the N.Z. Institution of
Engineers.

Opinions expressed in the journal are not necessarily
those of the Institution or of the publishers.

Published monthly by

TECHNICAL PUBLICATIONS LTD., 127 Molesworth
Street, P.O. Box 3047, Wellington, N.Z. Telephone:
735-739. Telegrams: Tecpub.

Managing Editor

F. N. STACE, B.E.(ELECT MECH), B.E.(MECH), C.ENG.,
F.I.E.E., F.I.S.T.C., M.I.E.E.E., M.N.Z.I.E.

Sub-Editor

V. J. WILSON, B.A., DIP. JOURN., HON. M.N.Z.A.S.C.

Advertisement Manager

P. D. DOILE

Business Manager

A. M. TEMPLE

Auckland Representative

R. M. (BUD) LITTLE, Dylit Media Ltd. 1st Floor,
Thode Bldg., 3091 Great North Rd., New Lynn, P.O.
Box 15-472. Telephone: 874-487.

Overseas representatives

UNITED KINGDOM AND EUROPE: MEDIA NET-
WORK EUROPE, 27 Wilfred Street, London, S.W.1.
Telex 28905. Telephone: 01-370-6269.

U.S.A. AND CANADA: S. S. KOPPE AND CO. INC., 10
Stuyvesant Ave., Lyndhurst, N.J. 07071, U.S.A.

AUSTRALIA: F. W. PUBLICATIONS, Suite 103, 84 Pitt
Street, Sydney 2000. Telephone: 231-5891

JAPAN: SUN-GAIN SHIA LTD., Tenroku Hankyu
Bldg., No. 5, 6 Chome Tenjinbashi-2, Oyodo-ku,
Osaka.

Subscriptions

Post free: New Zealand \$15.00 per year; overseas
\$20.00 per year.

Microfilm

Microfilms of *New Zealand Engineering* are available
from University Microfilms Inc., 300 North Zeeb
Road, Ann Arbor, Michigan 48106, U.S.A.

NZ ISSN 0028-808X

Leading article

Energy and New Zealand society 147

Papers and articles

Interference between power systems and telephone lines
Donald P. Wallace 148

Territorial local body control of flooding, landslip and erosion
hazards. *David E. Hollands, Alan Moores and Paul W. Schon* 151

The recovery of heat from textile dryer exhausts. *S. Reece Nicoll* 157

Tiwai Peninsula: A groundwater resource analysis ... *Bruce Hunt* 162

General

Consultants' notebook 163

Submission on energy goals and guidelines 164

N.Z.I.E. News 165

Building Services Group 168

Changes in roll 168

Personal 169

Obituary 169

Candidates for election 169

Noteworthy 169

This is Fenner's new metric drive package with more power for your money!



And drive we will give you in every sense of the word . . . Because we've been driving ourselves hard for more than three years — phasing in new, improved belts, size by size, until we were ready to announce that the power ratings of all Fenner wedge and V-Belts have been substantially increased. And this improved performance potential hasn't stopped at the belts alone. Side by side with these new developments, we've introduced a range of pulleys specially designed to cope with these higher power ratings.



PERFORMANCE

Resilience is an essential feature of nearly all V-Belt drives but too much stretch in the belt will lead to slip, loss of power, and shorter belt life. Continuous development of the load carrying cords ensures that Fenner V-Belts operate within narrow limits of elongation: at the same time there is an ample safety margin of tensile strength.

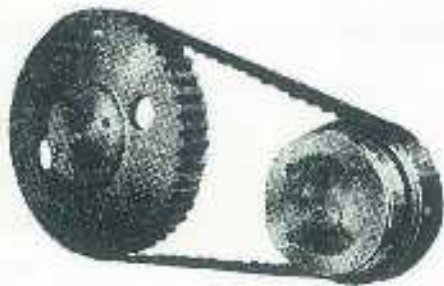
MATCHING

Because their tension members are sealed against moisture, length stability is an important feature of Fenner V-Belts. Matched sets stay matched.



SPACESAVER WEDGE BELT DRIVES

"Slimmer, lighter, shorter, cheaper", accurately sums up the Fenner Spacesaver Wedge-Belt Drive, which will transmit the same power as a V-Belt drive in much less space. Fixing to shafts is easier, cost is reduced and storage space is released. Fenner Spacesaver Wedge-Belt drives (with TAPER-LOCK fixing) are the obvious choice for all new drives.



TIMING BELT DRIVES

The perfect meshing of the belt teeth with those in the driving and driven pulleys achieves a positive drive — essential where synchronisation is required. No retensioning is needed after fixing; lubrication is unnecessary, and the elimination of creep or slip makes for cool running, negligible power loss and high efficiency. Ratios up to 8½ to 1, with load capacities up to 500 h.p., are readily accommodated.

Write for detailed information to the New Zealand distributors



**THE GENERAL
MACHINERY CO**
LIMITED

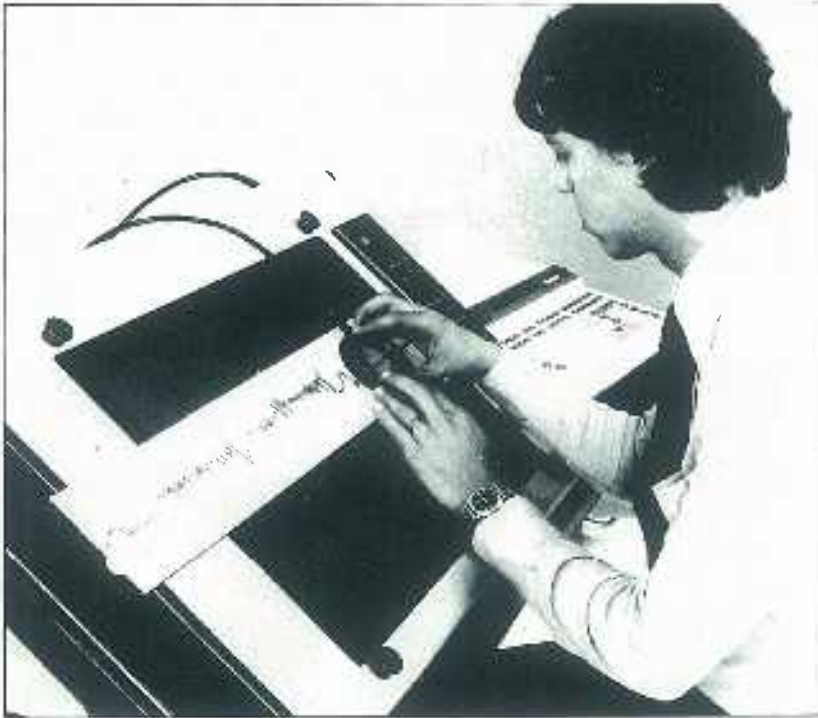
HEAD OFFICE
32 TAUPO QY.—WANGANUI
P.O. BOX 293—PHONE 50 335
TELEGRAMS: MILRIDGE
TELEX: MILRIDGE NZ3037

A member of the John Burns Group

For more information circle No. 2 on reader service card.

Graphs into Numbers

with the HP9874A digitizer



Whenever your graphic information must be converted into numeric form, the 9874 Digitizer makes the job easy. Digitizing makes analysis of strip-chart recordings easy and automatic. Electrocardiograms are examples of raw data that are commonly recorded on strip charts. Point locations along the charts are measured, converted into digital form and entered into a computer. The 9874 is faster and more accurate than manually measuring each point location and entering it into your computer through the keyboard. You can digitize recordings up to 53 kilometres long.

With the 9874's rear projection and tiltable platen features, projectable media can be easily digitized. Just set a projector behind the digitizer and tilt the glass platen to the vertical position. The platen's front surface is treated so you can project exact images such as X-rays. Another sample application where the 9874's rear projection feature might be used is in left ventricular volume studies of the heart. Computer analysis of this digitized information can help determine whether a coronary bypass operation is necessary.

Cursor. The 9874's free cursor gives you pinpoint precision. Its open-circle target, 250mm (0.010 in.) in diameter, allows you to accurately position the cursor over a line thinner than a human hair. The two switches on the cursor are the digitize switch and the vacuum switch.

Compatibility. System 45, Hewlett-Packard's powerful graphic desktop computer is an ideal partner for the 9874. It puts graphics, enhanced BASIC language, typewriter keyboard, optional thermal printer, CRT display and high-performance.



AUCKLAND 56 9651

WELLINGTON 87 7199

HEWLETT  PACKARD

Sales & Service from 172 offices in 65 countries.

To: Hewlett-Packard (N.Z.) Ltd.,
4-12 Cruickshank Street Kilbirnie, Wellington 3.

Please send me additional information on the 9874A

Name

Position

Organisation

Address

Phone

MCA/B02/N.Z.

For more information circle No. 3 on reader service card.